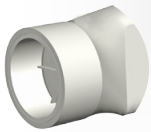
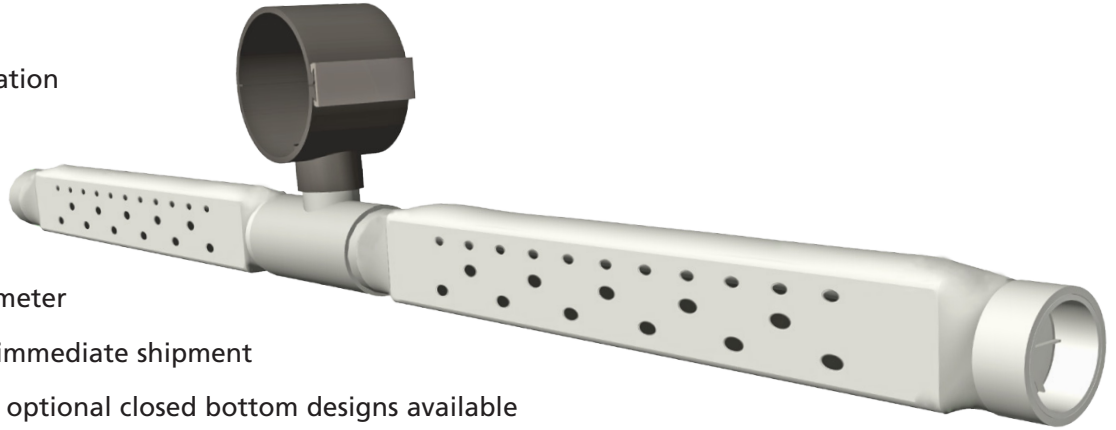




PRODUCT SPECIFICATIONS

MaxAir™ PVC Coarse Bubble Diffuser

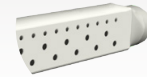
- Simplex or duplex configuration
- High airflow capacity
- Available in 24 inch length
- Clog resistant self-purge design
- Full 48 inch air release perimeter
- Standard units in stock for immediate shipment
- Standard open bottom and optional closed bottom designs available
- PVC or optional CPVC construction for maximum chemical and temperature resistance versus stainless steel



Rugged heavy duty construction with 3 inch connection (stronger than stainless steel)



Inverted air chamber design for uniform air release over a wide airflow range



High airflow capacity

MaxAir™ coarse bubble diffuser offers a proven clog-resistant design and is ideal for both mixing and aeration applications

EDI MaxAir diffuser provides broad band, coarse bubble aeration for maximum mixing efficiency. The unit is available in 24 inch standard length. The 24 inch diffuser unit provides a full 48 inch air release perimeter. Air release uniformity and mixing efficiency features multi-level air metering orifice design. This provides full utilization over the entire operating range of the unit.

MaxAir diffusers are ideal for the most demanding aeration and mixing applications including flow equalization, channel aeration, aerobic digesters, industrial, and mixing and scouring applications including RBC, MBR, IFAS, and MBBR.

Air distribution is achieved with fixed orifices positioned on three levels. As the air flow to the diffuser increases, the number of active orifices increases thereby minimizing the pressure required for increased airflow.

MADE IN
USA

EDI - Worldwide Headquarters
5601 Paris Road • Columbia, MO 65202 USA
+1 (573)-474-9456 • www.environmentaldynamics.com



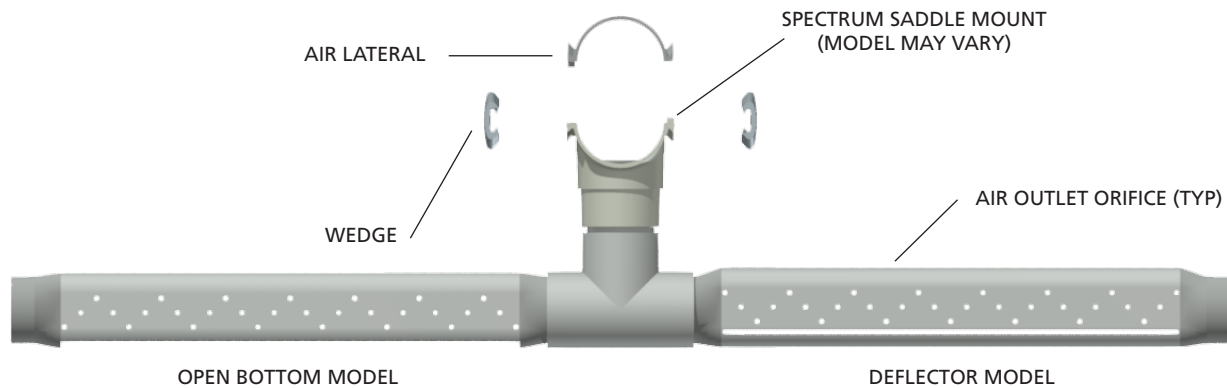
PRODUCT SPECIFICATIONS



The standard unit features an open bottom. The diffuser may be operated under a wide range of applications including intermittent applications. Optional deflector bottom design provides a mechanism to preclude entry of large particles into the diffuser and piping components.

The MaxAir™ diffuser is designed for long service life. All components are PVC or optional high temperature CVPC. The diffuser body attaches to the air piping using a Spectrum Diffuser Mount with a full 3-inch connection.

MaxAir diffusers feature the patented Spectrum™ Diffuser Mount. This unique mounting system clamps to the outside surface of the air supply pipe and may be installed on any pipe material. Saddle mounts are available from 3 inch through 8 inch pipe sizes (metric sizes are not available).



Diffuser Type	Design Airflow		Diffuser Length		Orifice Size		Dry Weight		Net Operating Buoyancy	
	scfm	Nm ³ /h	in	mm	ft ²	m ²	lb	kg	lb	kg
Simplex	0-50	0-79	32.0	813	Orifice engineered appropriately for each project.		6.0	2.7	11	4.9
Duplex	0-100	0-158	64.0	1630			11	5.0	17	7.7

- The approximate operating pressure of the diffuser at the mid-range is 2 to 4 inches (0.5 - 1.0 kPa).